

# SPiO SPY <sup>SPS-001</sup>

## System Platform IO Spy



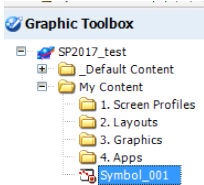
V1.0.0.6 2018



Switchbuilds IO spy software allows you to browse, filter and sort all physical IO within a Galaxy Repository speeding up fault finding, improving efficiency and locating references in graphics within your project.

- \* Easily connect to multiple Galaxies on a GR node
- \* Provides a list of duplicate physical IO addresses and their Instance and attribute names
- \* Allows copy of all displayed and filtered data for use with Excel
- \* Filter physical IO by Area, Instance Name, Alarmed, Historisation
- \* Sort on all columns including Alarm priority
- \* Text search for IO Addresses, attribute or Alarm message including usage of wildcards
- \* Cross reference physical IO with it's usage in a graphic for both embedded instances and native (Toolbox) graphics
- \* Resolves Auto assigned IO
- \* Displays total count of filtered rows

2014 & 2017  
System Platform



Archestra System Platform I/O Spy - SP2017\_test on 10.0.0.66

File Help

Filter

Area Instance Alarm History Find Text

All All All All

Area	Instance Name	Attribute	IO Address	Derived From	Alarm	History	Alarm Priority	Alarm Message
Plant_Area	Test1	Attribute001	Test.Clix1.Attribute001	\$UserDefined	No	No		
Plant_Area	Test1	Attribute002	Test.Clix1.Attribute002	\$UserDefined	Yes	No	500	me.Attribute002.Description
Plant_Area	Test1			\$UserDefined	No	Yes		
Plant_Area	Test1			\$UserDefined	Yes	Yes	500	me.Attribute004.Description
Plant_Area	Test1			\$UserDefined	No	No		
Plant_Area	Test1			\$UserDefined	No	No		

References for Tag: Test1.Attribute001

Reference	Location
S1	Instance
Symbol_001	Instance
Symbol_001	Toolbox
Test1	Instance

6 Entries

4 References